

CONTINENTAL NH3 PRODUCTS

INSTALLATION, OPERATION, REPAIR AND MAINTENANCE INSTRUCTIONS

PRODUCT SERIES: A-2600, A-2700

ATTENTION: Please follow all of the instruction in this manual carefully and read the entire manual completely, failure to do so may cause the product to function improperly or fail causing serious injury or death.



ANHYDROUS AMMONIA IS AN INHALATION HAZARD AND WILL CAUSE SERIES INJURY OR DEATH. PLEASE USE EXTREME CAUTION WHEN HANDLING IT OR PERFORMING ANY MAINTENANCE ON EQUIPMENT USED FOR ANHYDROUS AMMONIA..

ATTENTION: Before performing any installation, repair or maintenance please follow the instructions below.

1. You must be certified to work with anhydrous ammonia. If you are not please seek out the appropriate agricultural department to attend a class to obtain the proper certification.
2. Wear appropriate safety goggles, gloves and breathing apparatuses.
3. Drain all tanks, hoses and piping of anhydrous ammonia COMPLETELY before removing, installing, performing maintenance or repairing any equipment.
4. Always remove device from service before performing any maintenance or repair
5. have sufficient water near by
6. Obey all local, state and federal laws regarding the handling of anhydrous ammonia

INSTALLATION & OPERATION

1. Apply pipe thread sealant to any pipe thread to be installed into valve.
2. Make sure the valve is turned off before installation.
3. Make sure valve is facing the appropriate direction in relation to flow
4. Before operating valve make sure valve is attached to appropriate piping, hose or fitting.
5. Before operating the valve make sure there is appropriate hoses and valves are attached to the outlet side of the valve. Never open valve with out appropriate hoses and valve down stream of the valve, doing so will release anhydrous ammonia into the air that could cause sever injury.
6. Before open the valve turn off any down steam valve to prevent ammonia from spraying out into the air.
7. To open valve turn hand wheel counter clockwise all the way until the hand wheel stops turning. NEVER OPEN VALVE PARTIALLY; DOING SO WILL PREVENT ANY EXCESS FLOW CHECK IN THE SYSTEM FROM FUNCTIONING PROPERLY.
8. To close valve turn hand wheel counter clockwise and tighten firmly. NEVER LEAVE VALVE OPEN UNATTENDED OR WHILE TRAVELING DOWN A ROAD. VALVE SHOULD ONLY BE OPEN WHILE IN USE.
9. If valve is attached to a coupling, follow step 8 then drain connection with appropriate bleeder valve. Pay close attention to the direction the bleeder valve port is facing and make sure it's pointing in a safe direction. See Coupling and bleeder valve operational instruction for more detailed instruction.

MAINTENANCE

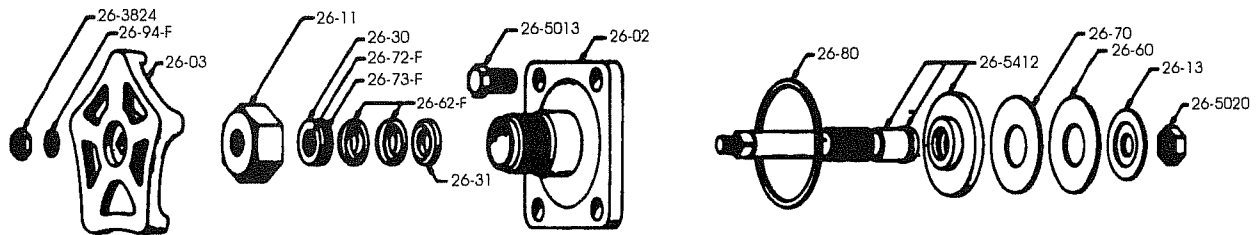
1. Check valve regularly for leaks and wear.
2. If any threads on the valve are getting warned down replace the valve immediately
3. If valve leaks from pipe thread connection try to tighten the valve to stop the leak. If it continues to leak replace the valve.
4. If valve leaks from the stem, 26-100 gently tighten 26-14 packing nut to stop leak. If this fails either replace the valve or install a repair kit, A-26-RK immediately.
5. If valve leaks from bonnet, 26-04 or seat, 26-60, either replace valve or install repair kit, A-26-RK immediately.

REPAIR

1. Remove valve from service by following the above ATTENTIONS AND CAUTIONS.
2. Remove bonnet assembly 26-02 from valve body and remove hand wheel from stem.
3. Remove stem 26-5412 and packing nut 26-11 and remove all of the packing from the bonnet 26-02.
4. Unscrew 26-5020 seat screw and 26-60 seat and 26-70 rubber seat cushion and replace the seat screw and tighten firmly. Note rubber seat cushion goes under the 26-60 seat.
5. reinstall the 26-30 washer bevel side up and install new Teflon packing 26-62-F bevel side up and replace the inside and outside orings 26-72 and 26-73 in the follower 26-31 and install it in to the bonnet flat side up
6. Place some grease on the threads of the bonnet where the 26-11 packing nut goes and reinstall the packing nut hand tight.
7. Reinstall the 26-5312 stem into the bonnet 26-02 by pushing gently and turning clockwise simultaneously until the stem is completely screwed all the way to the bonnet.
8. Put thread sealant on the new bonnet gasket 26-80 and reinstall the bonnet into the valve body and install and tighten the 4 bonnet retaining bolts.
9. Reinstall the hand wheel onto the stem and tighten packing nut 26-14 until snug. The tighter you get the packing nut the harder the hand wheel is to turn so adjust to desired tension.
10. Reinstall the valve into service by following the above installation instructions.

QUESTIONS CALL 800-537-5642

Catalog Number	Description	List Price	100 Piece Ship Wgt.
26 SERIES VALVES CATALOG NUMBERS, A-2600, A-2700 REPAIR PARTS			
26-02	BONNET		
26-03	HAND WHEEL		
26-102NS	TEFLON SCRAPER RING		
26-11	PACKING NUT		
26-13	SEAT RETAINER WASHER		
26-30	PACKING FOLLOWER		
26-31	PACKING RETAINER WASHER		
26-3824	HAND WHEEL LOCK NUT		
26-5013	BONNET BOLT		
26-5020	LOCK NUT		
26-5412	STEM & SWIVEL POPPET ASSEMBLY		
26-60	NYLON SEAT		
26-62-F	TEFLON "V" RING PACKING (SET)		
26-64	TEFLON SCRAPER RING		
26-70	SEAT CUSHION (HYCAR)		
26-72-F	FOLLOWER WIPER "O" RING (INTERNAL)		
26-73-F	FOLLOWER WIPER "O" RING (EXTERNAL)		
26-786	BONNET, STEM, SWIVEL POPPET ASSEMBLY		
26-80	BONNET GASKET		
26-94-F	HAND WHEEL LOCK WASHER		
A-26-RK	REPAIR KIT - 26-30, 26-31, 26-62-F, 26-64, 26-70, 26-72-F, 26-73-F, 26-80		



CONTINENTAL NH 3 PRODUCTS CO., INC.

130 YORKTOWN

P.O. BOX 225323

DALLAS, TEXAS 75222-5323

800-537-5642